

NOTES:

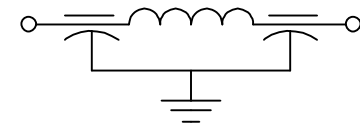
1. SUGGESTED MOUNTING HOLE:  $\phi.221$
2. MAY BE SUPPLIED WITH CONICAL TIPS.
3. HARDWARE IS INCLUDED

CAPACITANCE	3000 pF MIN.
TEMP. RANGE	-55°C TO +125°C
CURRENT	10 AMPS
WORKING VOLTAGE	85°C -- VDC 125°C 200 VDC
DC RESISTANCE	.01 OHMS MAX.

IL=PER MIL-STD-220, NO LOAD

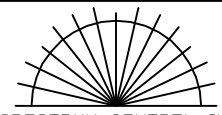
FREQ. MHz	I.L. (db)
10	5
50	--
100	45
1 GHz	70
10 GHz	70

SCHEMATIC



CAPACITANCE

PART: SCI-1270-009  
 BAG:  
 1270-009  
 DATE CODE  
 QTY./BAG (200 MAX.)

REV. NO.	4	3	2	REV. NO.	TOLERANCES UNLESS OTHERWISE SPECIFIED	 SPECTRUM CONTROL INC. ERIE, FAIRVIEW PENNSYLVANIA
CHANGE NOTICE	CN 202457 REDRAWN	CN 200614	CN 184990 REDRAWN		Fractions $\pm 1/64$	
					Dec. .xx $\pm$	
					Dec. .xxx $\pm .010$	
					Angles $\pm 0^{\circ} 30'$	
					CODE IDENT. NO. DLSP2	Dwn. KRDZALIC Ckd. 7/11/01 Description FILTER SING, PI, BSHG. 1270-009 Scale NONE