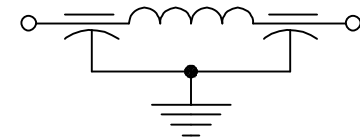


CAPACITANCE pF	12000pF GMV
TEMP. RANGE	-55°C TO 125°C
CURRENT	10 AMP
WORKING VOLTAGE	85°C, 100 VDC 125°C, 70 VDC
D.C. RESISTANCE	.01 OHM MAX.
I.L. PER MIL-STD-220 MIN. @ NO LOAD	
FREQ. MHz	I.L. (db)
10 MHz	25
20 MHz	40
100MHz	70
400MHz	70
10 GHz	70

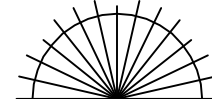
SCHEMATIC



MARKING:

PART: NONE
 BAG: 1234-000
 DATE CODE
 QTY./BAG (200 MAX.)

NOTE: SUGGESTED MOUNTING HOLE = $\phi.160$

	8	7	6	5	4	3	2	1	0	REV. NO.	TOLERANCES UNLESS OTHERWISE SPECIFIED	 SPECTRUM CONTROL INC. ERIE, FAIRVIEW PENNSYLVANIA		
	CN 206597	CN 202454	CN 201250	CN 185103	CN 165705	CN 153749	CN 153131	CN 148903	CN 146190	CHANGE NOTICE	Fractions $\pm 1/64$		Dwn. D.Humphreys	Description
											Dec. .xx \pm		Ckd. 4/9/02	FILTER, SING, PI, EYELET
											Dec. .xxx $\pm .015$		Apvd.	1234-000
											Angles $\pm 0^{\circ} 30'$		Scale NTS	
											CODE IDENT. NO. DLSP2			